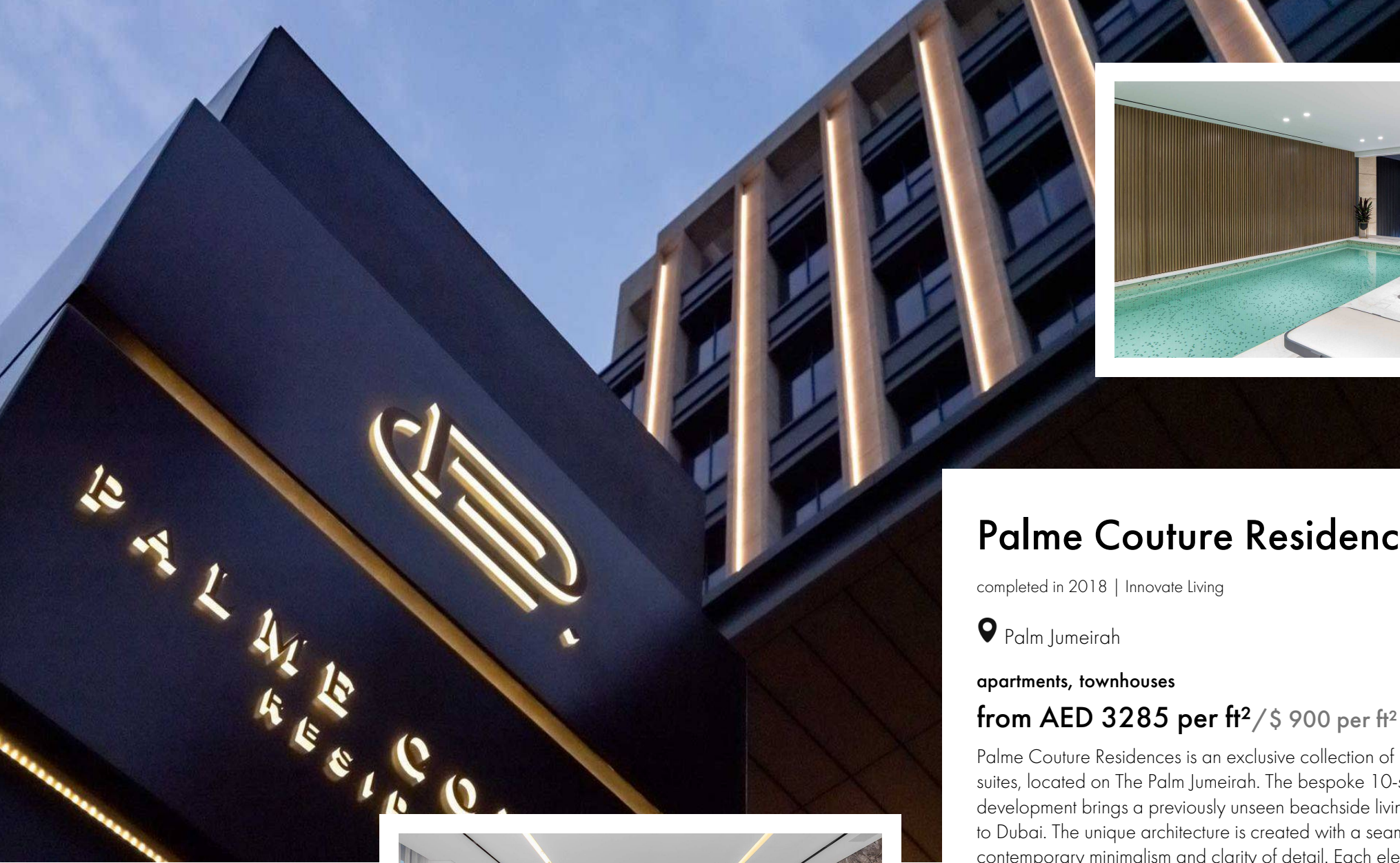




## Complete brochure of new buildings in Dubai Marina from Whitewill







## Palme Couture Residences

completed in 2018 | Innovate Living

 Palm Jumeirah

**apartments, townhouses**

**from AED 3285 per ft<sup>2</sup> / \$ 900 per ft<sup>2</sup>**

Palme Couture Residences is an exclusive collection of 14 residential suites, located on The Palm Jumeirah. The bespoke 10-storey development brings a previously unseen beachside living concept to Dubai. The unique architecture is created with a seamless contemporary minimalism and clarity of detail. Each element has been hand selected to create a customised canvas of experience. Each apartment is complemented with open space, clean lines and maximised glazing to highlight the view.

Interiors are designed with high-end Italian production and a unique mix of exquisite marbles. The 5-bedroom duplexes have indoor or outdoor pools, and the 4-bedroom villas feature outdoor pools. The royal penthouse has 4-bedrooms, a separate 3-bedroom guest house and rooftop pool.



Helpline

**+971 (4) 597-3460**

[the-palm.ae](https://the-palm.ae)





# The Palm Tower

completed in Q4 2021 | Nakheel PJSC

📍 Palm Jumeirah

apartments

**from AED 4018 per ft<sup>2</sup> / \$ 1100 per ft<sup>2</sup>**

The Palm Tower is a 52-storey residential complex with 432 apartments on Dubai's iconic island Palm Jumeirah. The project was built in a modern minimalistic style with a large glass area, which offers the residents of the skyscraper breathtaking views of the Persian Gulf and all the sights of the city. 18 lower floors are occupied by the luxurious hotel St. Regis Dubai — The Palm, offering a variety of services to apartment owners.

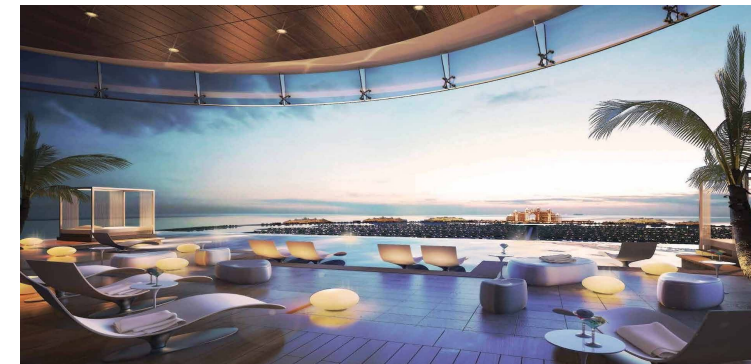
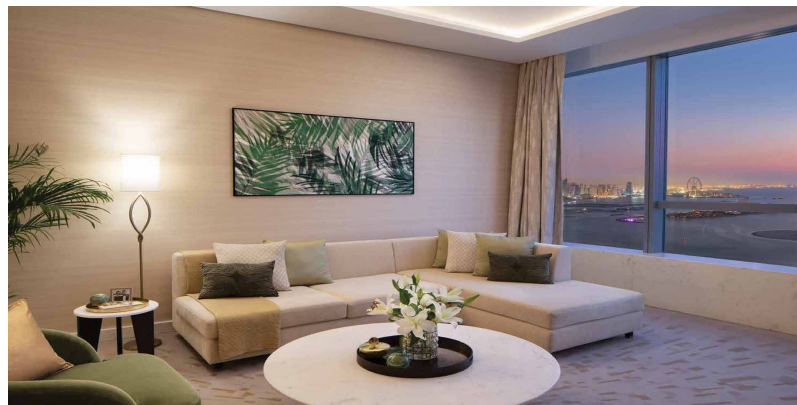
In the collection of The Palm Tower you can choose ready-to-live apartments with elegant furniture and reliable integrated appliances.

The interior in soft beige shades is filled with a daylight through the panoramic windows and creates a sense of calm and relaxation.



Helpline  
**+971 (4) 597-3460**

[the-palm.ae](https://the-palm.ae)







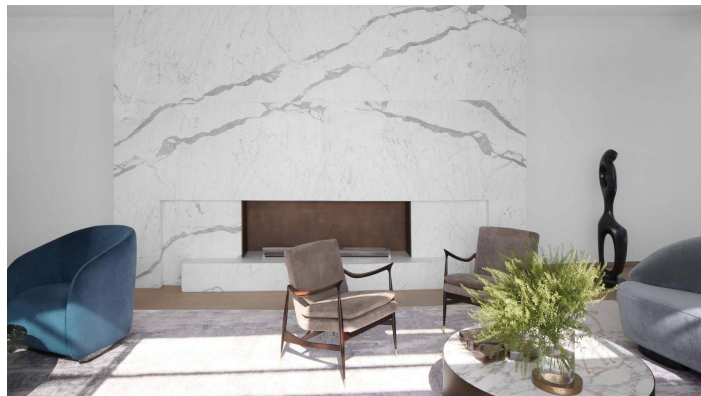
## One Palm

completed in Q4 2021 | Omniyat

 Palm Jumeirah

### apartments

One Palm is a residential building, located in Palm Jumeirah's premiere plot and managed by Dorchester Collection. Designers of the project decided to maximize privacy and exclusivity by creating a personal lobby and corridor for each apartment. The modern interior scheme in the penthouse is conceptualized by Elicyon, boasting double height living areas, while floor to ceiling glass opens the Sea views.



Helpline

+971 (4) 597-3460

[the-palm.ae](https://the-palm.ae)





# Seven Palm

Q1 2023 | Seven Tides

📍 Palm Jumeirah

apartments, app.kinds\_alt.studios, app.kinds\_alt.penthouses—2  
from AED 2846 per ft<sup>2</sup> / \$ 800 per ft<sup>2</sup>

Seven Palm — residential complex located on a beautiful Palm Jumeirah. The main feature of the project is the construction of the building — two towers are joined at the top by a stunning one-of-a-kind infinity pool. The North tower of the Seven Palm is reserved for private residences, a luxury hotel and apartments will be situated in the South tower. The complex offers beautifully designed studios, 1, 2 & 3-bedroom apartments and two exclusive duplex penthouses with private swimming pool and access to the restaurants on the top floor of the building.

Seven Palm offers breathtaking views of the Arabian Ocean, Marina skyline and the biggest Ferris wheel in the world Ain Dubai.



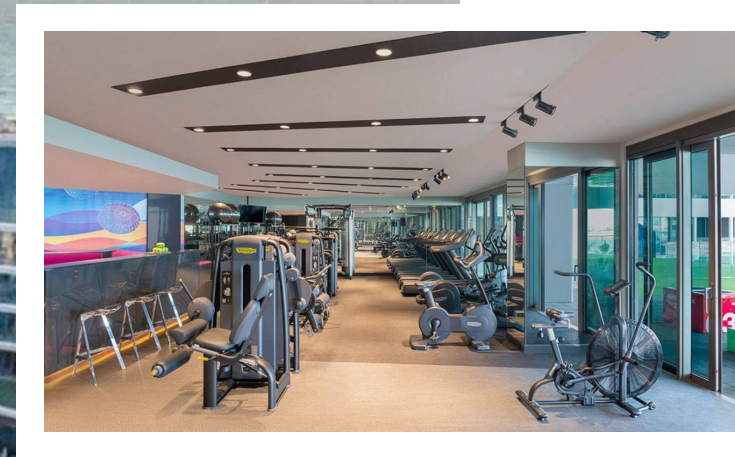
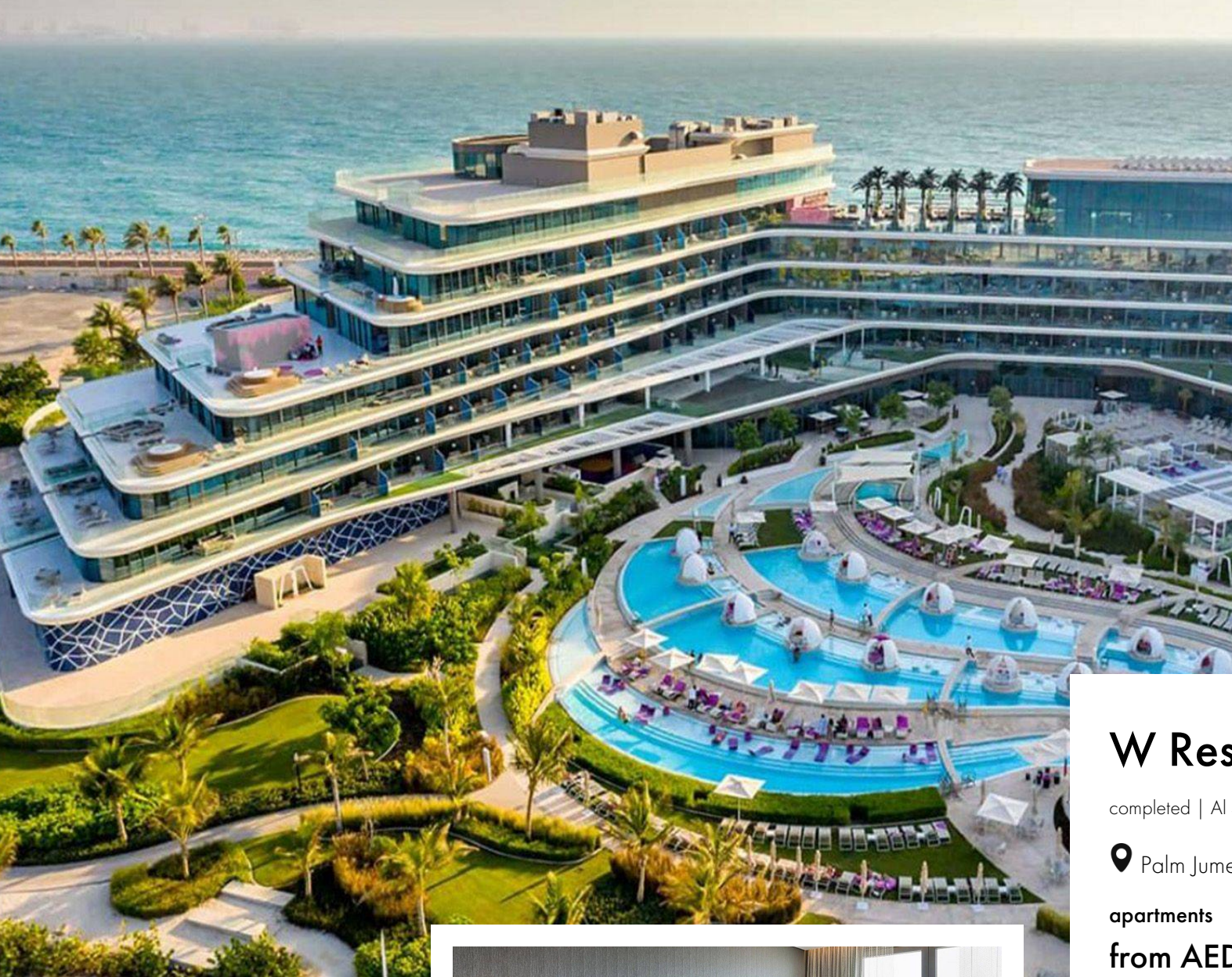
Helpline

+971 (4) 597-3460

the-palm.ae







## W Residences

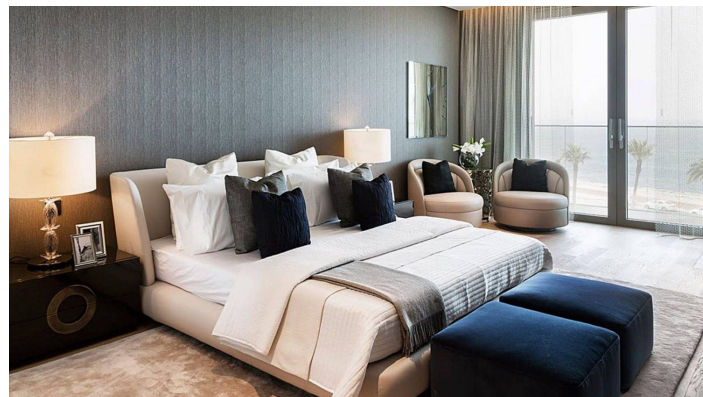
completed | Al Sharq Investment

📍 Palm Jumeirah

apartments

**from AED 3776 per ft<sup>2</sup> / \$ 1000 per ft<sup>2</sup>**

W Residences is a residential complex of 8 mansions with 104 apartments located on the artificial island of Palm Jumeirah with stunning views of the Dubai coastline and Persian Gulf. The facade of the house is made in a minimalist style with panoramic glazing and spacious open terraces. The complex includes apartments for 2, 3, 4 and 5 bedrooms with terraces or private garden and pool. Penthouses with a ceiling height of 6,5 meters have a separate lobby and a private lift.



Helpline

**+971 (4) 597-3460**

[the-palm.ae](https://the-palm.ae)





# The Royal Atlantis Residences

Q1 2023 | Kerzner International

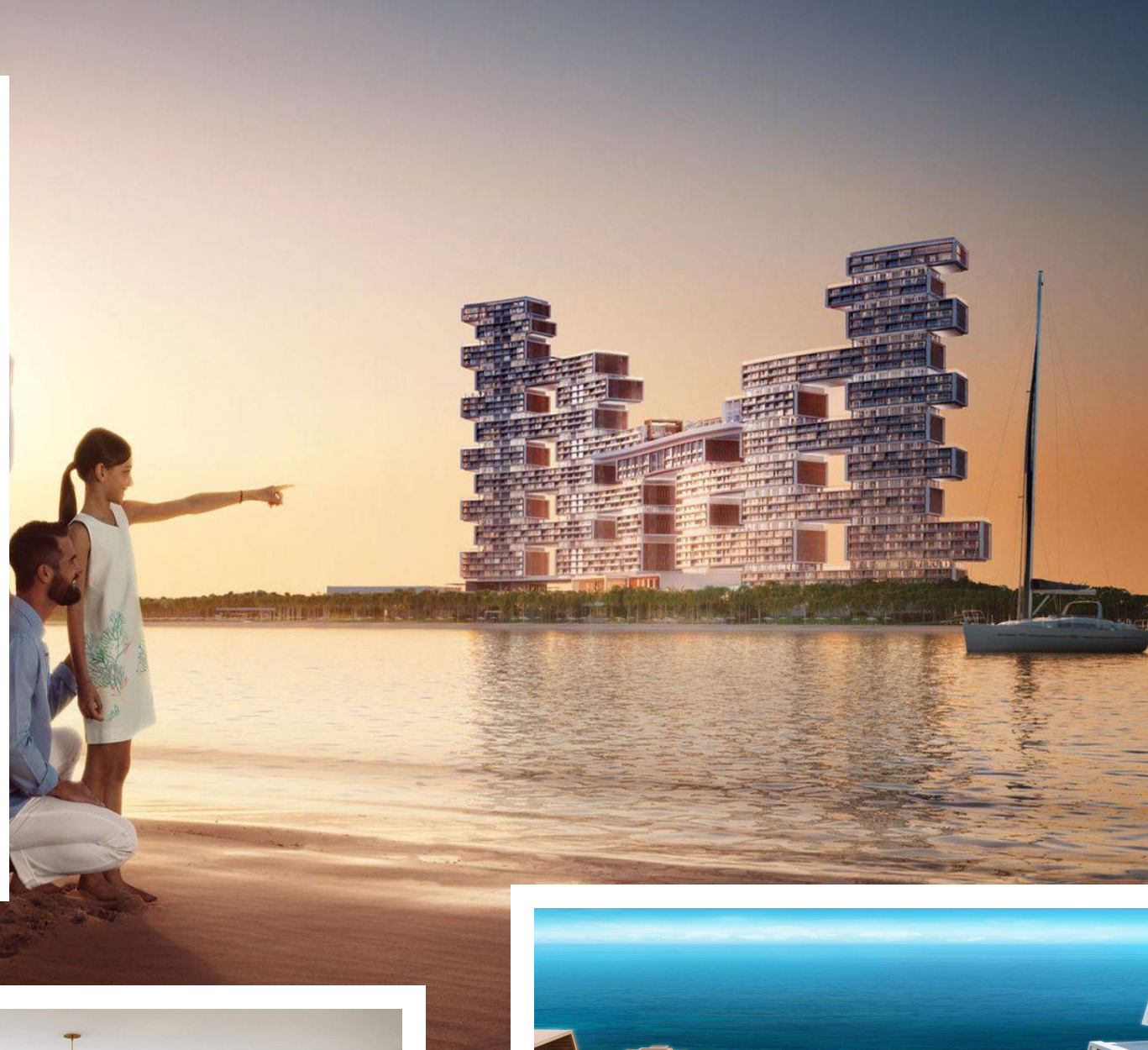
📍 The Palm Jumeirah

apartments

**from AED 14261 per ft<sup>2</sup> / \$ 3900 per ft<sup>2</sup>**

The Royal Atlantis is a complex of luxury residences located on The Palm Jumeirah Island, next to the iconic Atlantis resort. The recognizable silhouette of The Royal Atlantis has become the new icon of Dubai. The endless turquoise waters of the Persian Gulf begin right outside the door of The Royal Atlantis. Breathe in the clean sea air, snorkel in the warm waves, dive deep in the Ambassador Lagoon or soak up the luxurious beaches.

There is a 90-meter-high The Sky Pool — during the day it is a place for relaxation and quiet talks, and bright colors of nightlife light up here in the rays of the setting Dubai sun. Just as a collector selects a painting or a sculpture, you can choose a residence that suits your taste. Parisian interior designer Sibylla de Margerie asked talented artists to create handcrafted accessories and details from fine textiles, leather and porcelain.



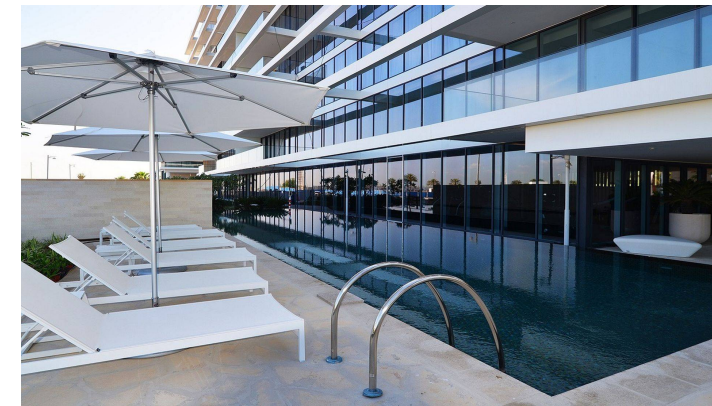
Helpline

**+971 (4) 597-3460**

[the-palm.ae](http://the-palm.ae)







## Serenia Residences

completed in Q1 2018 | Palma Holding

 The Palm Jumeirah

**apartments**

**from AED 3266 per ft<sup>2</sup> / \$ 900 per ft<sup>2</sup>**

Serenia Residences is a 9-storey private residential resort, located in The Palm Jumeirah, overlooking Burj Al Arab, the Dubai Marina and picturesque blue seas of The Gulf. Minimalist glass facade designed by the renowned architect behind the landmark Emirates Towers — Hazel Wong. In Serenia Residences you can choose 1,2,3 bedroom apartments and half-floor penthouses with furnishings in modern style, panoramic windows and spacious terrace harmoniously complement natural palette interior and soft accent decoration.



Helpline

**+971 (4) 597-3460**

[the-palm.ae](https://the-palm.ae)





# Anantara

completed | Seven Tides

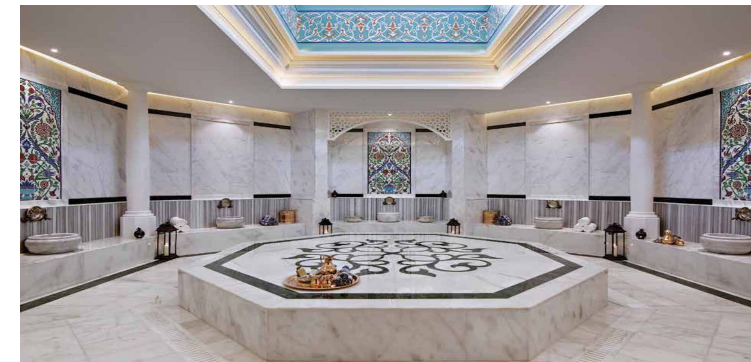
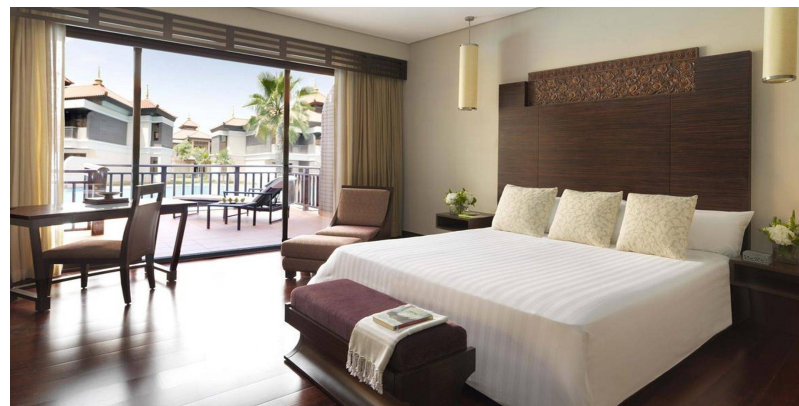
📍 East Crescent, Palm, Dubai

apartments, villas

**from AED 2037 per ft<sup>2</sup> / \$ 600 per ft<sup>2</sup>**

Anantara is a five-star hotel complex in oriental style with 293 villas and apartments located on the first line of the beach. The Palm Jumeirah is situated on an artificial island overlooking the Dubai coastline and the Persian Gulf. Anantara offers its residents a five-star hotel service of Anantara Dubai The Palm Resort & Spa. Swimming pools are open around the clock, and 7 restaurants invite you to try Asian cuisine. Diving and other water sports can be arranged upon request. The SPA-centre features a Turkish hammam and a beauty salon.

While the adults are relaxing, the kids can play in the children's pool or in the children's club under the supervision of the staff.



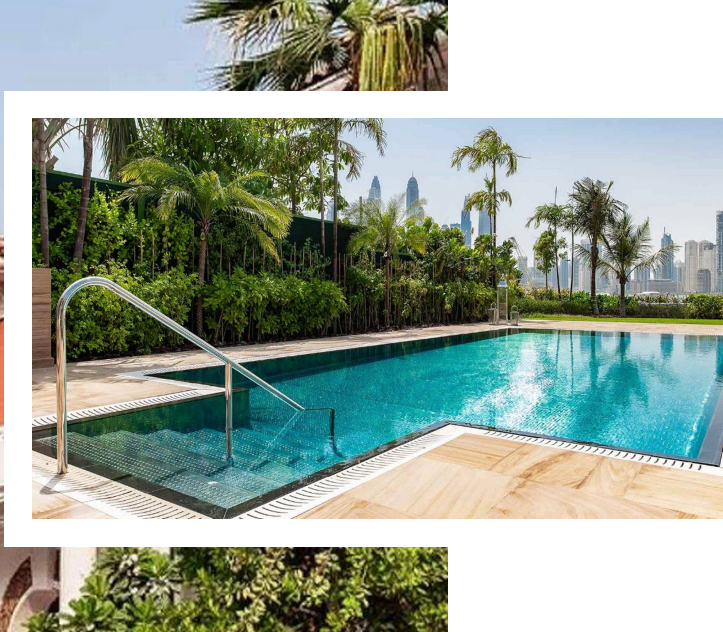
Helpline

**+971 (4) 597-3460**

[the-palm.ae](http://the-palm.ae)







## XXII Carat Villas

completed in Q4 2017 | Forum Group

📍 Dubai Plot C02, West Crescent

### villas

XXII Carat Villas is a premium club complex for 22 villas and 2 penthouses on the picturesque Palm Jumeirah island with breathtaking views of the crystal clear waves of the Persian Gulf. The facades of the villas are made in Mediterranean style with columns, pergolas, arched windows and doors, creating a feeling of serene relaxation on a private European peninsula. Privacy, exclusive location, intimate accommodation are just some of the features that make XXII Carat Villas the unique development.

All villas have 7 bedrooms to provide each family member and guests with a cozy private space. The interiors are finished in a classic style with elements of the Renaissance with the use of semi-precious natural stones. Kitchens are equipped with a set and reliable household appliances. Rooftop terraces, a spacious private garden and a swimming pool will allow you to relax in a private atmosphere and spend time with your family. The complex also offers 2 ready-to-move penthouses with stunning views of the island and the city.



Helpline

+971 (4) 597-3460

the-palm.ae





# Muraba Residences

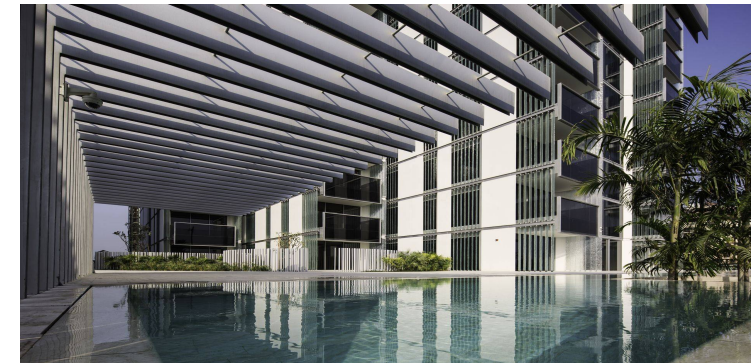
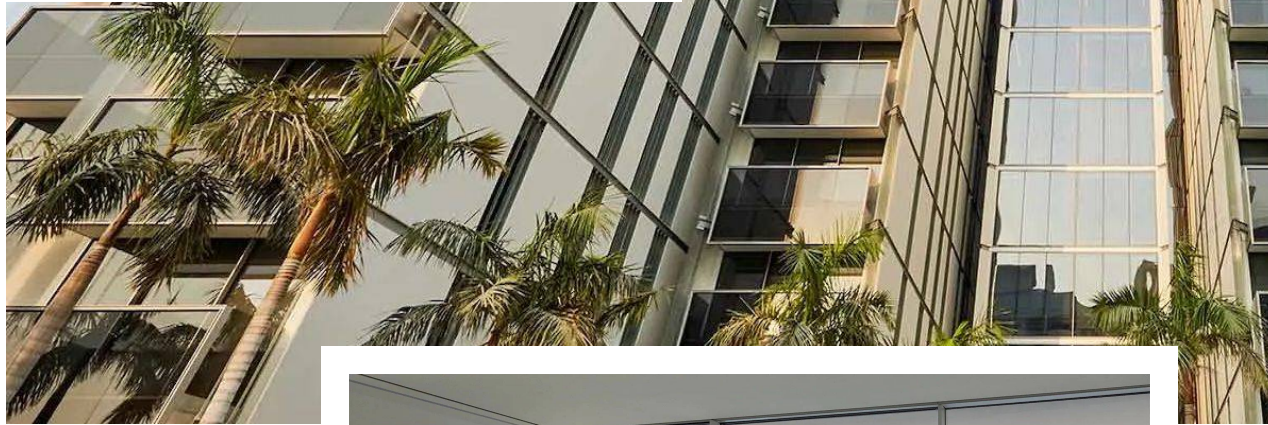
handover Q1 2017 | Muraba

📍 East Crescent, Palm Jumeirah

apartments

**from AED 3824 per ft<sup>2</sup> / \$ 1000 per ft<sup>2</sup>**

Muraba Residences is a 10-storey residential building, located in the Eastern Crescent of Palm Jumeirah, providing a view on two towering landmarks, the Burj Al Arab and the Burj Khalifa on the East and the Palm Atlantis on the West. In Muraba Residences you can choose a light and open apartment with 1 to 3-bedrooms or spacious penthouse. Each apartment feature a private balconies, floor-to-ceiling windows make the most of the panoramic views across the Dubai skyline.



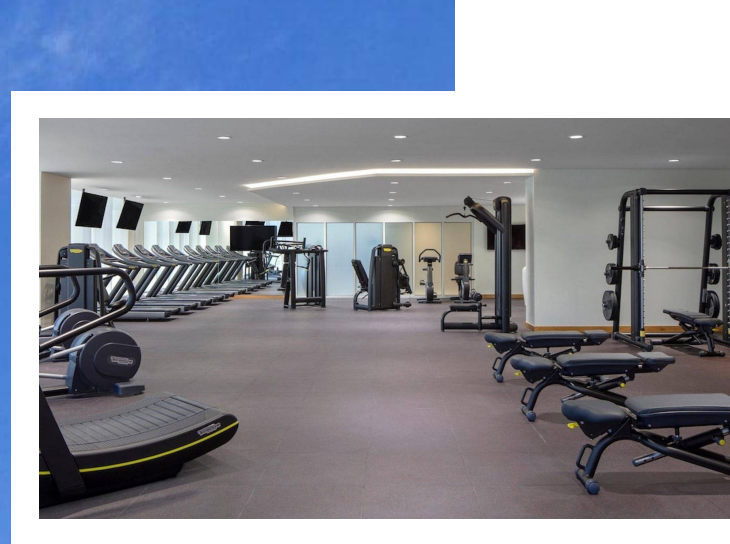
Helpline

**+971 (4) 597-3460**

[the-palm.ae](http://the-palm.ae)







## Avani Palm View Dubai Hotel & Suites

completed | Al Fahim Group

📍 Al Sufouh Dubai Marina

### apartments

Avani Palm View Dubai Hotel & Suites is a 43-storey skyscraper with 264 apartments, located 2 km from Sufouh Beach and 3.4 km from Jumeirah Beach Residence. The design of the building's facade is made in a minimalist style of glass and metal with panoramic windows. The interiors are designed in soft and light colors with bright accents. On the floor there are marble tiles and parquet in natural beige oak. Each apartment is equipped with laconic functional furniture and reliable household appliances.



Helpline

+971 (4) 597-3460

the-palm.ae





# Royal Bay by Azizi

Q3 2017 | Azizi

📍 The Palm Crescent, Palm Jumeirah, Dubai

## apartments

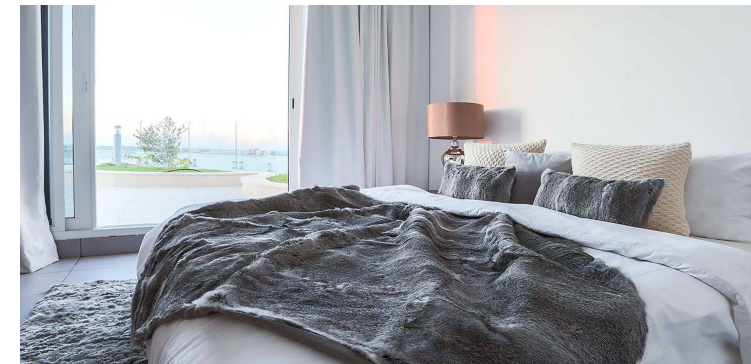
Royal Bay by Azizi is a 10-storey mixed-use building on The Palm Crescent, Palm Jumeirah, Dubai. The building is located on the eastern crescent of the world-famous island Palm Jumeirah. It provides access to a Panoramic Views of JBR, Palm Jumeirah and The World's Largest Dubai Ain. The original architecture attracts attention with wave-shaped design of the building and panoramic glazing. Royal Bay offers a fine mix of 1 to 3 bedroom apartments and 2 luxury penthouses with a private pool and jacuzzi.

Apartments are carefully finished with attention to every detail. The wide windows increase the amount of natural light and open a panoramic view of the Arabian Sea. At the center of each apartment there is an open-plan living room with a stylish kitchen area with high-end appliances, in the bedroom there is premium-class furniture. Each apartment is provided with wide balconies, where you can relax enjoying fresh air and beautiful view over the sea.

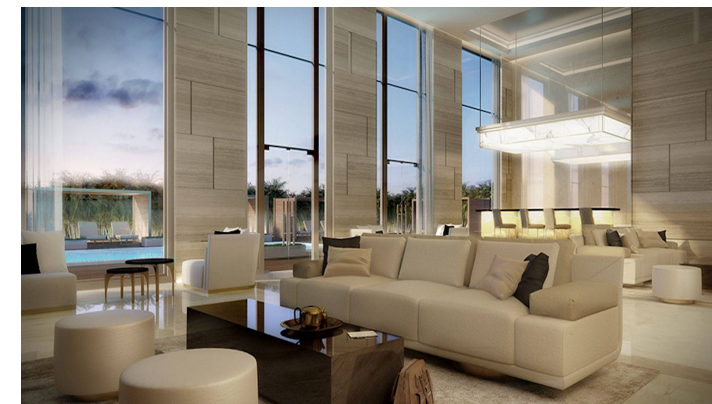
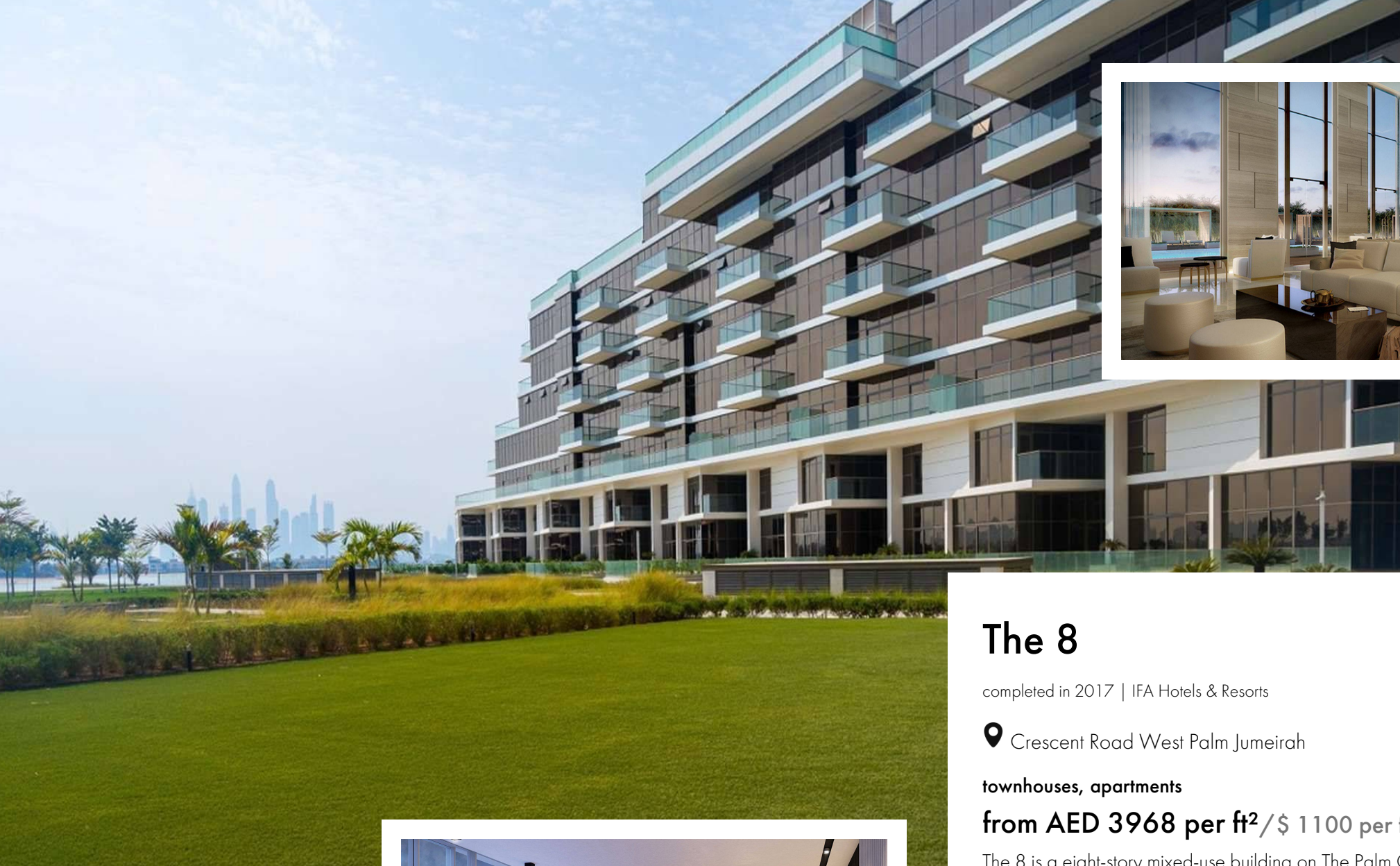


Helpline  
**+971 (4) 597-3460**

[the-palm.ae](http://the-palm.ae)







## The 8

completed in 2017 | IFA Hotels & Resorts

📍 Crescent Road West Palm Jumeirah

**townhouses, apartments**

**from AED 3968 per ft<sup>2</sup> / \$ 1 100 per ft<sup>2</sup>**

The 8 is a eight-story mixed-use building on The Palm Crescent. Lightweight architecture and wide-open balconies create chic Miami style living vibe, where every detail is sophisticated and clean with a contemporary touch. The interiors create the perfect blend of modern and classic and are made of natural stone floorings and high-quality wall finishes. In The 8 you can choose one-, two-, three-bedroom apartments, spacious penthouse or an elegant townhouse. Each apartment comes with a service room with its own full bathroom and a guest powder room.



Helpline

**+971 (4) 597-3460**

[the-palm.ae](https://the-palm.ae)





# Palm Views

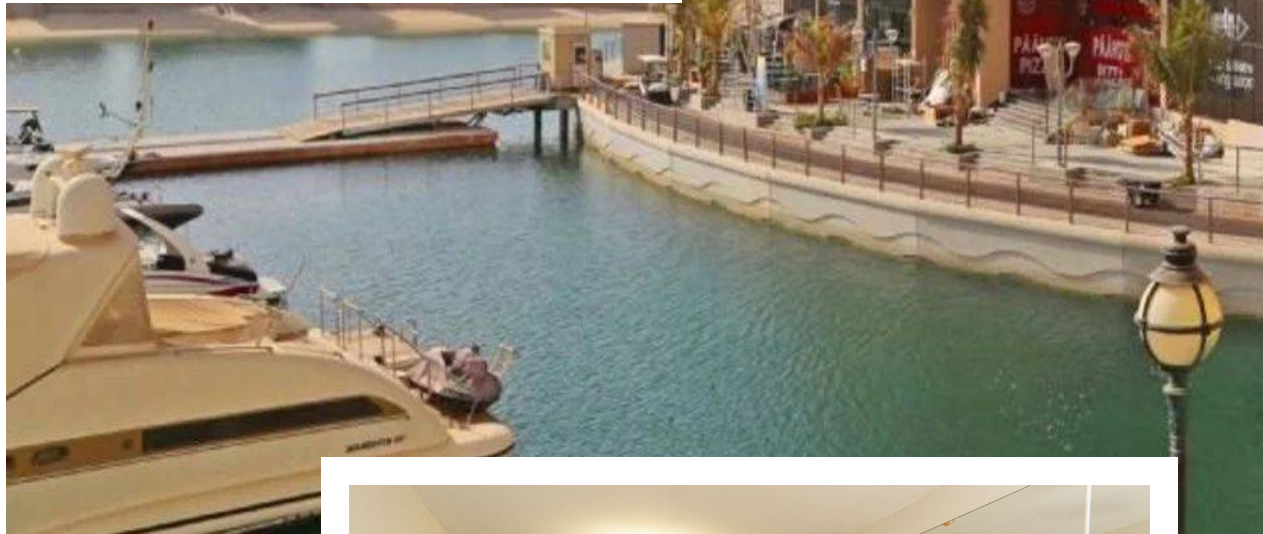
Q1 2014 | Nakheel PJSC

📍 4 Al Hamriya St

apartments

**from AED 2186 per ft<sup>2</sup> / \$ 600 per ft<sup>2</sup>**

Palm Views is a residential complex on the man-made island The Palm Jumeirah. The 5-story towers, Palm Views and West Palm Views East, are nestled on the right and left sides of the island. The sandy colour staircase leads down to the Persian Gulf, while the panoramic windows add a touch of modernity to the traditional Arabian architecture.

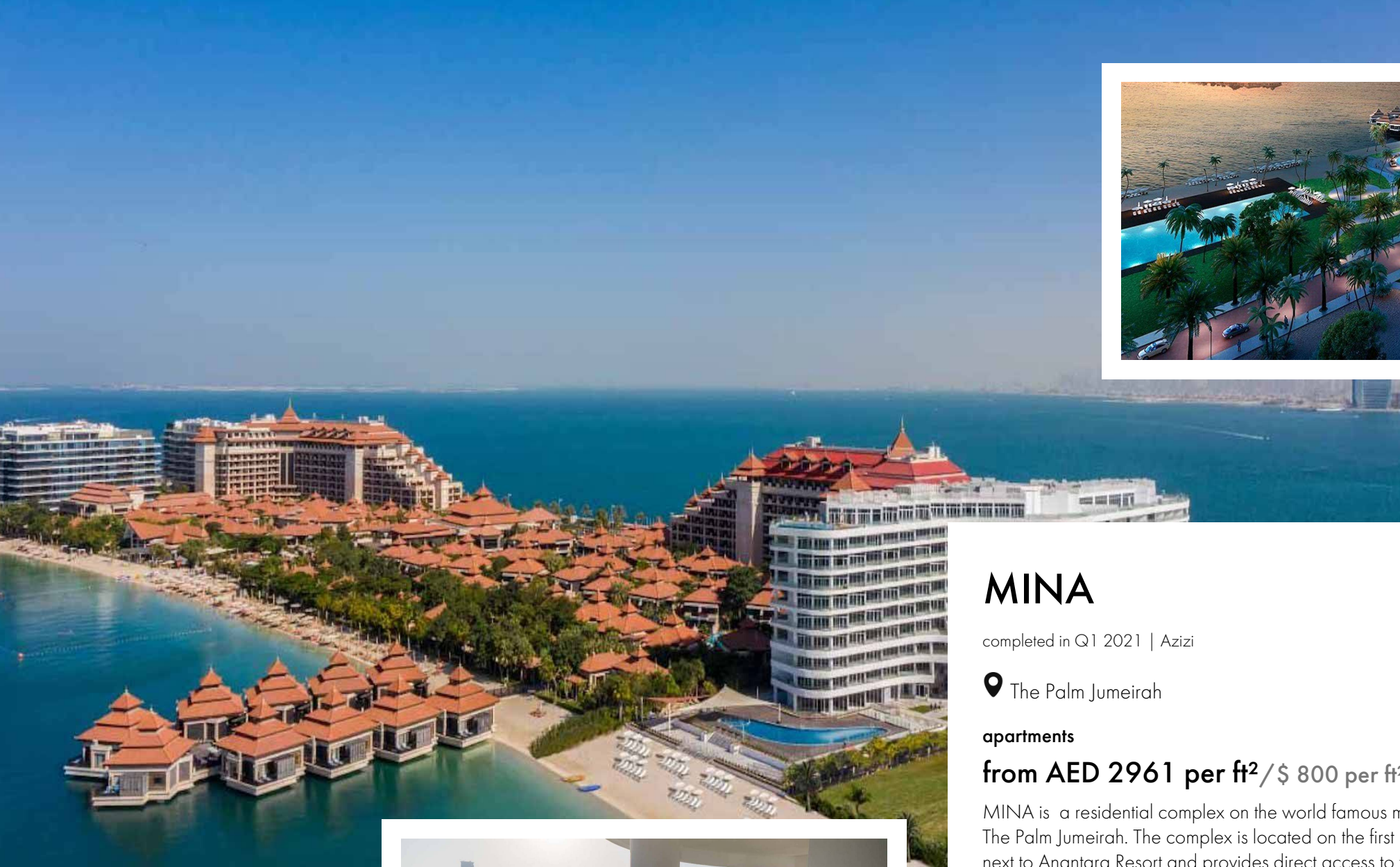


Helpline  
**+971 (4) 597-3460**

[the-palm.ae](http://the-palm.ae)







# MINA

completed in Q1 2021 | Azizi

 The Palm Jumeirah

**apartments**

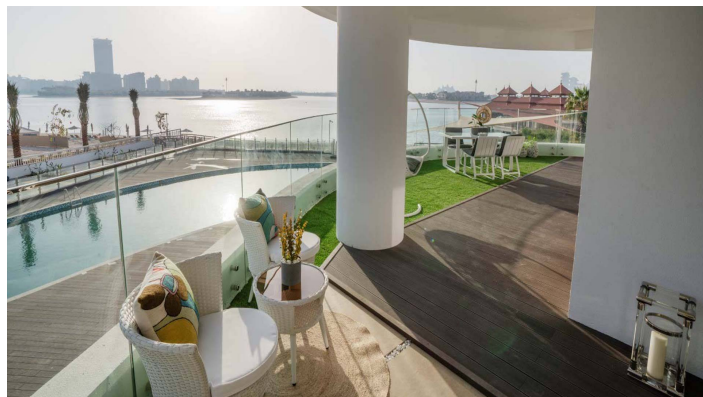
**from AED 2961 per ft<sup>2</sup> / \$ 800 per ft<sup>2</sup>**

MINA is a residential complex on the world famous man-made island The Palm Jumeirah. The complex is located on the first line of the sea, next to Anantara Resort and provides direct access to the private beach. The 10-storey building seems to be laid out in «layers», while the soft lines of the snow-white facade reflect the winding paths of green gardens.

At MINA, you can choose a one and two-bedroom apartments or a 3-bedroom penthouse with a private pool and a spacious terrace offering unparalleled scenic views of the Dubai coastline and the sail-shaped Burj Al Arab hotel. The interior is designed in muted beige tones, panoramic windows fill the space with natural light.

Helpline  
**+971 (4) 597-3460**

[the-palm.ae](https://the-palm.ae)





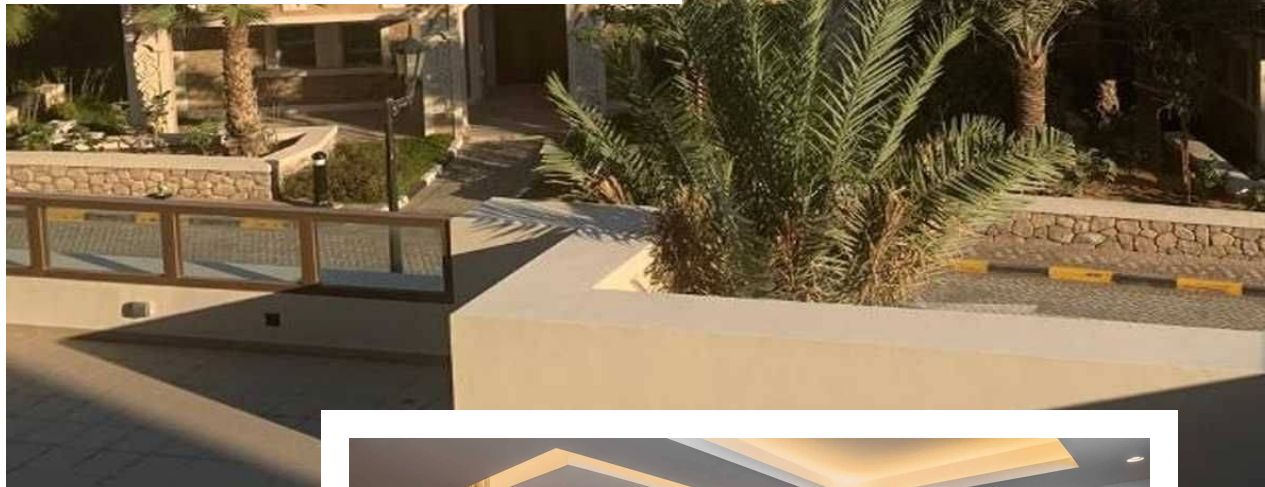
# Balqis Residence

completed | IFA Hotels & Resorts

📍 Crescent Road West, Palm Jumeirah, PO Box 62562, Crescent Rd

## apartments, villas, townhouses

Balqis Residence is a collection of villas, townhouses, penthouses and apartments that make up 300 superb residences for modern living on the top of the world famous Palm Jumeirah island. The design of the project is inspired by the values and symmetry of traditional Arab architecture. The contemporary living spaces feature fabulous furnishings and fittings, the inviting outdoor areas are surrounded with greenery, the sea and the beach.



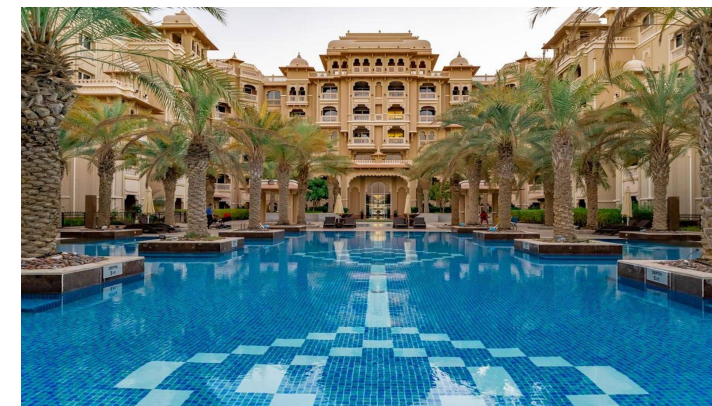
Helpline

+971 (4) 597-3460

[the-palm.ae](http://the-palm.ae)







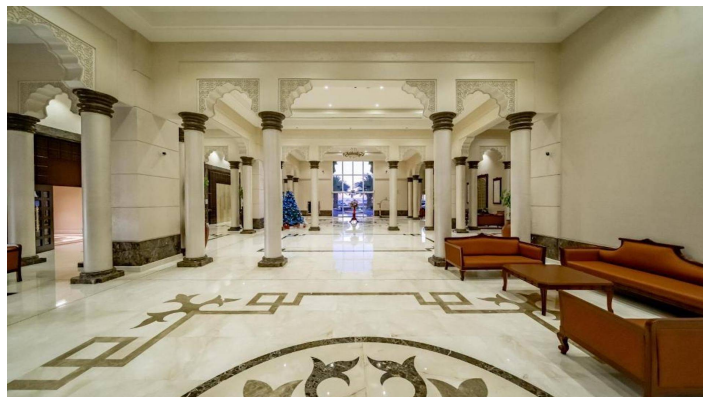
## Maurya

ETA Star

 Palm Jumeirah Crescent

### apartments, villas

Grandeur Residence Maurya is a residential building on the Crescent of Palm Jumeirah. Maurya is part of the Grandeur Residences residential development. Architecture of the project resembles the grand historical palaces of Rajasthan. Grandeur Residence Maurya provides a wide range of facilities, including private beach access, swimming pool and gymnasium. There is a convenience store on the ground floors and covered parking space with valet service.



Helpline

+971 (4) 597-3460

[the-palm.ae](http://the-palm.ae)





# Marina Residence Palm Jumeirah

completed in 2009 | Nakheel PJSC

📍 Marina Residences, Palm Jumeirah, Sheikh Zayed Road, Dubai

apartments

**from AED 1 489 per ft<sup>2</sup> / \$ 400 per ft<sup>2</sup>**

Marina Residences Palm Jumeirah is a residential development of six 15-storey buildings set on the largest man-made island in the world. The towers are interconnected with large podiums housing flowering gardens, swimming pools and recreation areas. The architecture of the waterside residence is inspired with Mediterranean theme, the French Riviera and traditional Arabic buildings. In the complex you can choose 1, 2 and 3-bed apartments, but the highlight of the project is the four-level penthouses with an area of over 14,000 sq. feet in which you can truly feel on top of the world.



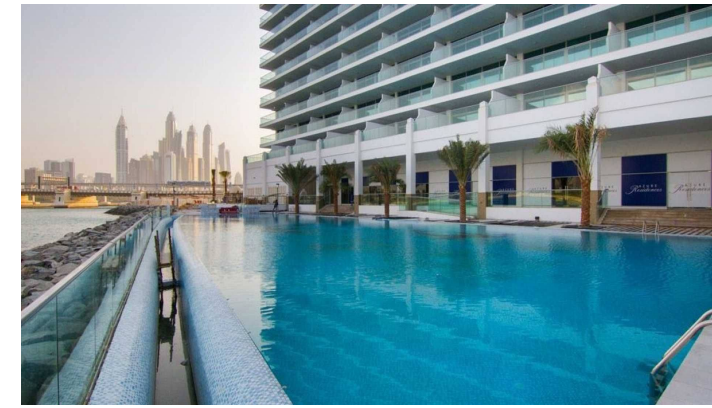
Helpline

**+971 (4) 597-3460**

[the-palm.ae](http://the-palm.ae)







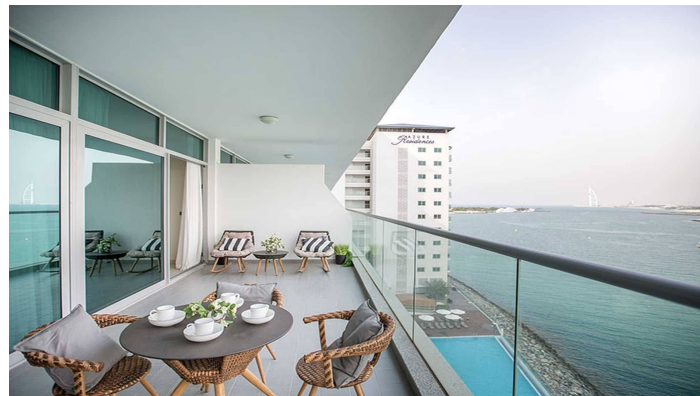
## Azure Residences

completed in 2017 | Nakheel PJSC

📍 4543+Q3R, The Palm Jumeirah

### apartments

Azure Residences is a 10-storey building with 170 luxury, ready to move in apartments on the eastern shoreline of Palm Jumeirah with direct access to the beach. In the complex you can choose 1-, 2-, or 3-bedroom apartment, each with a large private terraces offering magnificent views of the sea and Dubai skyline.



Helpline

+971 (4) 597-3460

the-palm.ae





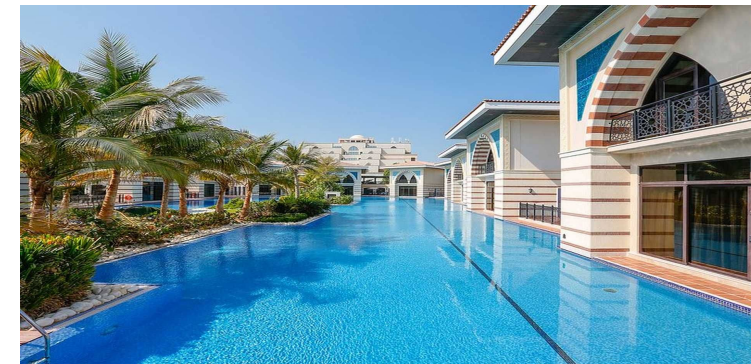
# Zabeel Saray Royal Residences

completed | Meraas

📍 Crescent Road, The Palm Jumeirah

## villas

Zabeel Saray Royal Residences is a collection of 38 villas with breathtaking ocean views, located on Palm Jumeirah. The villas are set around a large lagoon pool within palms and tropical gardens. In the complex you can choose spacious 4- or 5-bedroom residences, finished with use of premium materials such as Turkish marble, rich dark wood and exterior ceramics from the ancient town of Iznik in western Anatolia. Each home benefits from a private sun terrace.



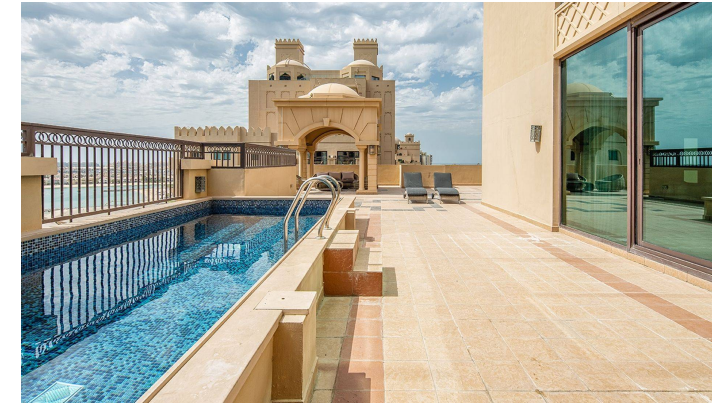
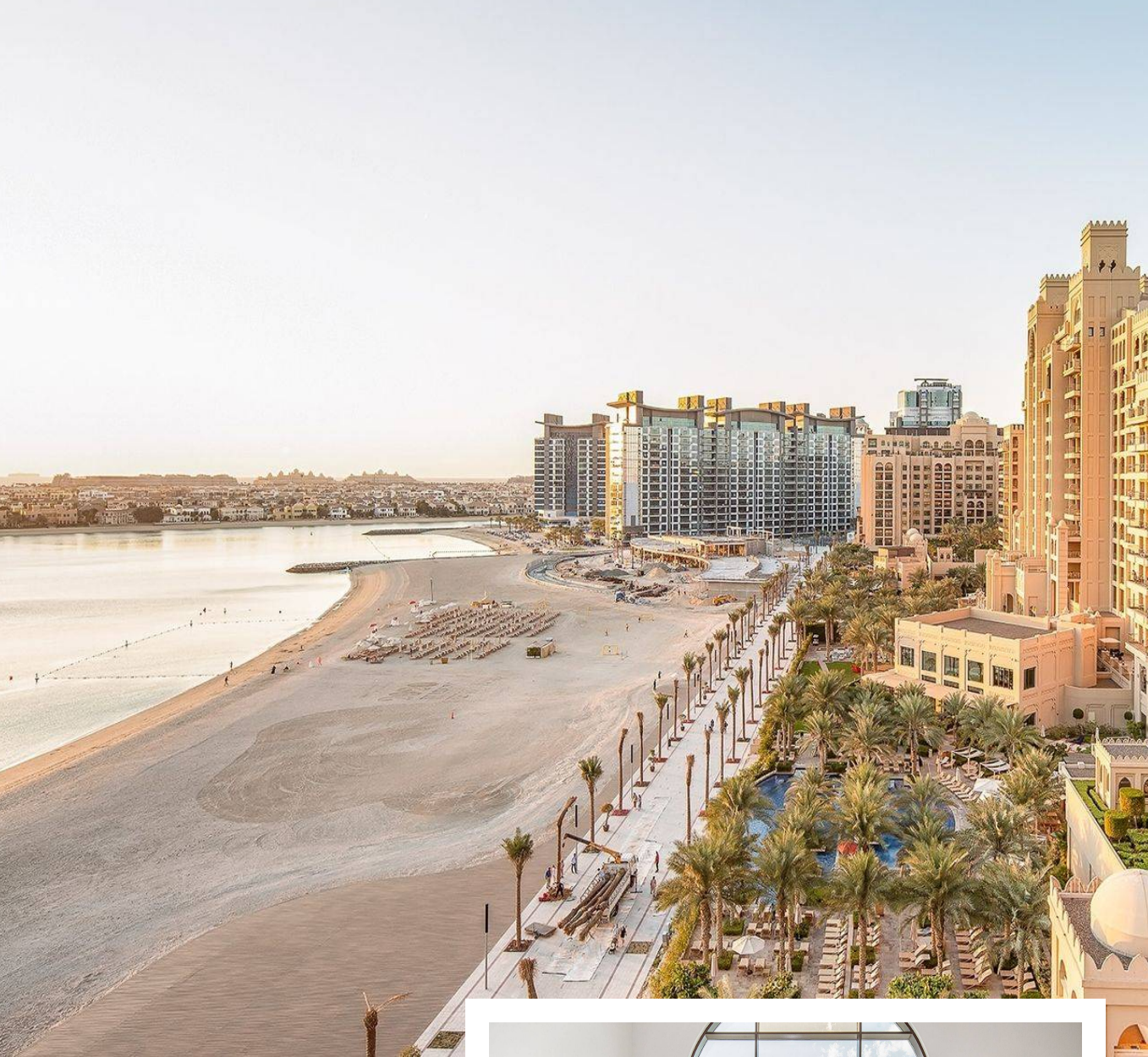
Helpline

+971 (4) 597-3460

the-palm.ae







## The Fairmont Palm Residences

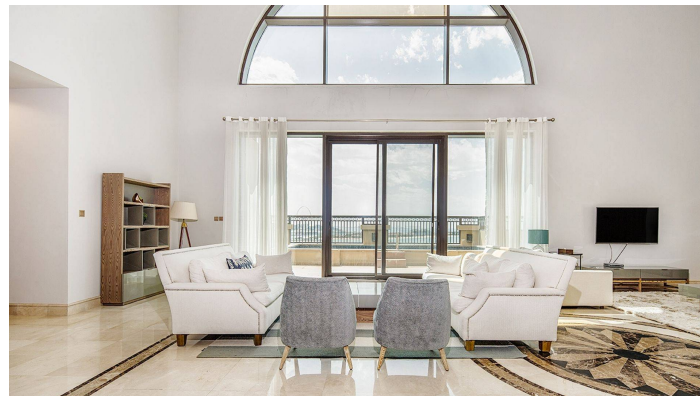
completed | IFA Hotels & Resorts

 The Palm Jumeirah, Dubai

### townhouses, villas

The Fairmont Palm Residences is a 12-storey residential complex with 558 hotel rooms and apartments with 5-star hotel service on the artificial island of Palma, on the first line of the Persian Gulf. The Arabian-style complex is surrounded by the sea on one side and the promenade Alltihad Park on the other. In the project, you can choose apartments, townhouses with access to a private patio, or penthouses with roof terraces and pools. The apartments offer views of the blue sea and skyscrapers of mainland Dubai.

All apartments are finished, kitchen and sanitary ware — all you have to do is choose upholstered furniture.



Helpline

+971 (4) 597-3460

[the-palm.ae](https://the-palm.ae)





# Kempinski Hotel & Residence

2010 | EPG Hotels & Resorts

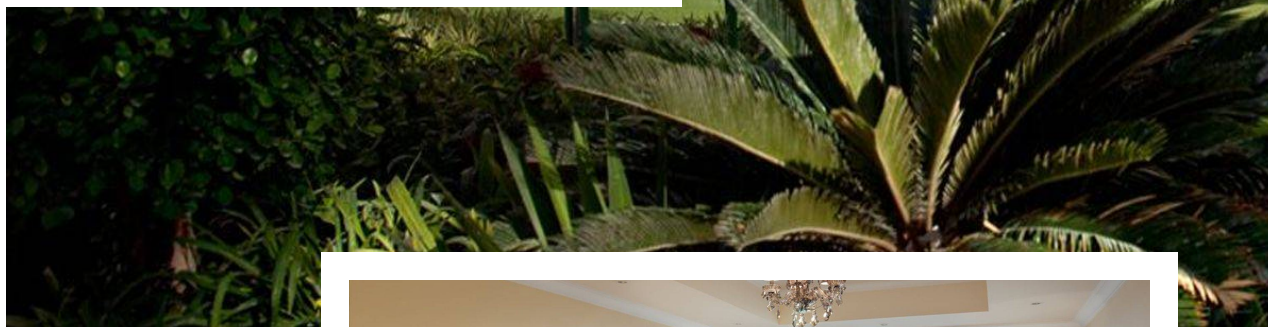
📍 Crescent West, Palm

apartments, townhouses

**from AED 41 16 per ft<sup>2</sup> / \$ 1 100 per ft<sup>2</sup>**

Kempinski Hotel & Residence is a five-star hotel, housing hotel rooms and apartments on the artificial island The Palm Jumeirah. This is the third Kempinski hotel in the Arab Emirates and the first on the coast of Dubai. The building is located on the first line of a private beach. The luxurious neoclassical-style facades are complemented with white columns, balustrades and arches. In Kempinski Hotel & Residence you can choose fully furnished apartments with neoclassical-style interior.

Townhouses feature a private rooftop pool and provide private access to the territory. The windows offer direct views of Palm Island and the skyscrapers of mainland Dubai.



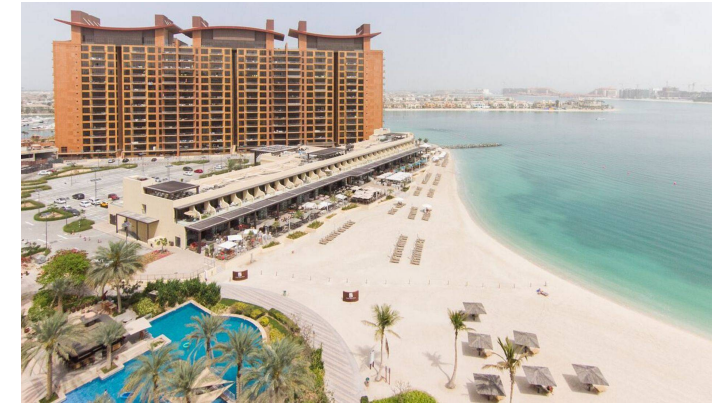
Helpline

**+971 (4) 597-3460**

[the-palm.ae](http://the-palm.ae)







## Shoreline Apartments

2007 | Nakheel PJSC

 The Palm Jumeirah, Dubai

**apartments**

**from AED 1531 per ft<sup>2</sup> / \$ 400 per ft<sup>2</sup>**

Shoreline Apartments is a residential complex of twenty 11-story buildings, located on the first and second coastline of the man-made island The Palm Jumeirah. The Arabian-style facades made of sand-coloured plaster are complemented by oriental carvings, turrets and decorative domes on the roof. Each building has a guarded territory with underground parking. The buildings on the first line feature outdoor pools and have access to a private beach with walking paths. The complex provides residents with a round-the-clock concierge service.

Work out in a state-of-the-art gym, enjoy a relaxing spa, gather your friends for barbecue dinner, or captivate children with a game in a dedicated play area without leaving the complex.



Helpline

**+971 (4) 597-3460**

[the-palm.ae](http://the-palm.ae)





# Signature Villas

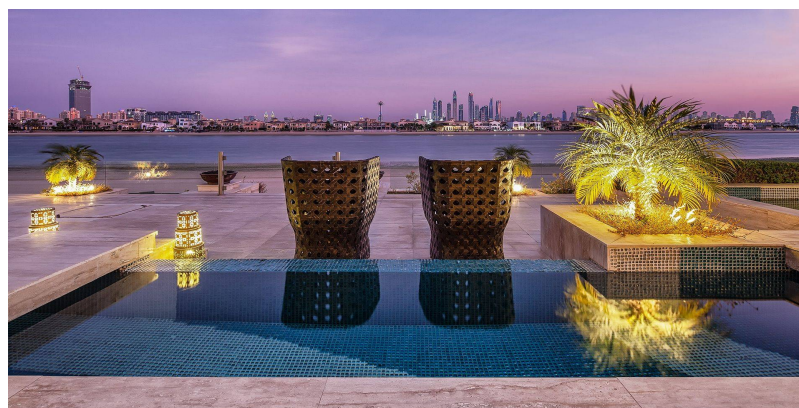
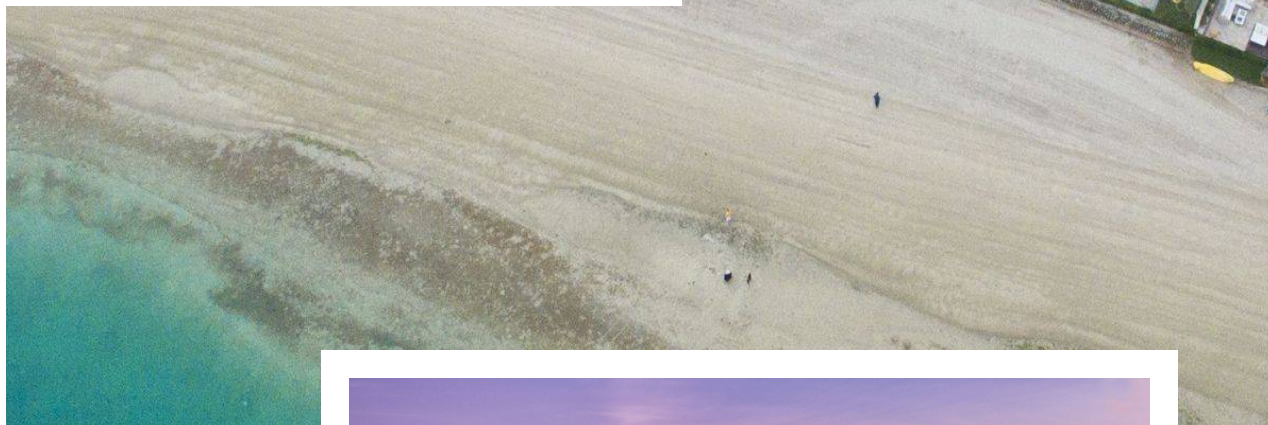
2016 | Nakheel PJSC

📍 The Palm Jumeirah, Dubai

villas

**from AED 7143 per ft<sup>2</sup> / \$ 1900 per ft<sup>2</sup>**

Signature Villas — 4,000 villas in a variety of architectural projects from 3 to 6 bedrooms on the «branches» of the artificial island of Palma in the Persian Gulf. All villas ranging from 13,000 ft to 14,000 ft can be divided into Arabic and contemporary designs. Each house has access to the water and the walking area of the beach. There is a guarded entrance to the territory of each «rope» of Palma. For residents, a recreation area with a swimming pool was placed at the entrance.



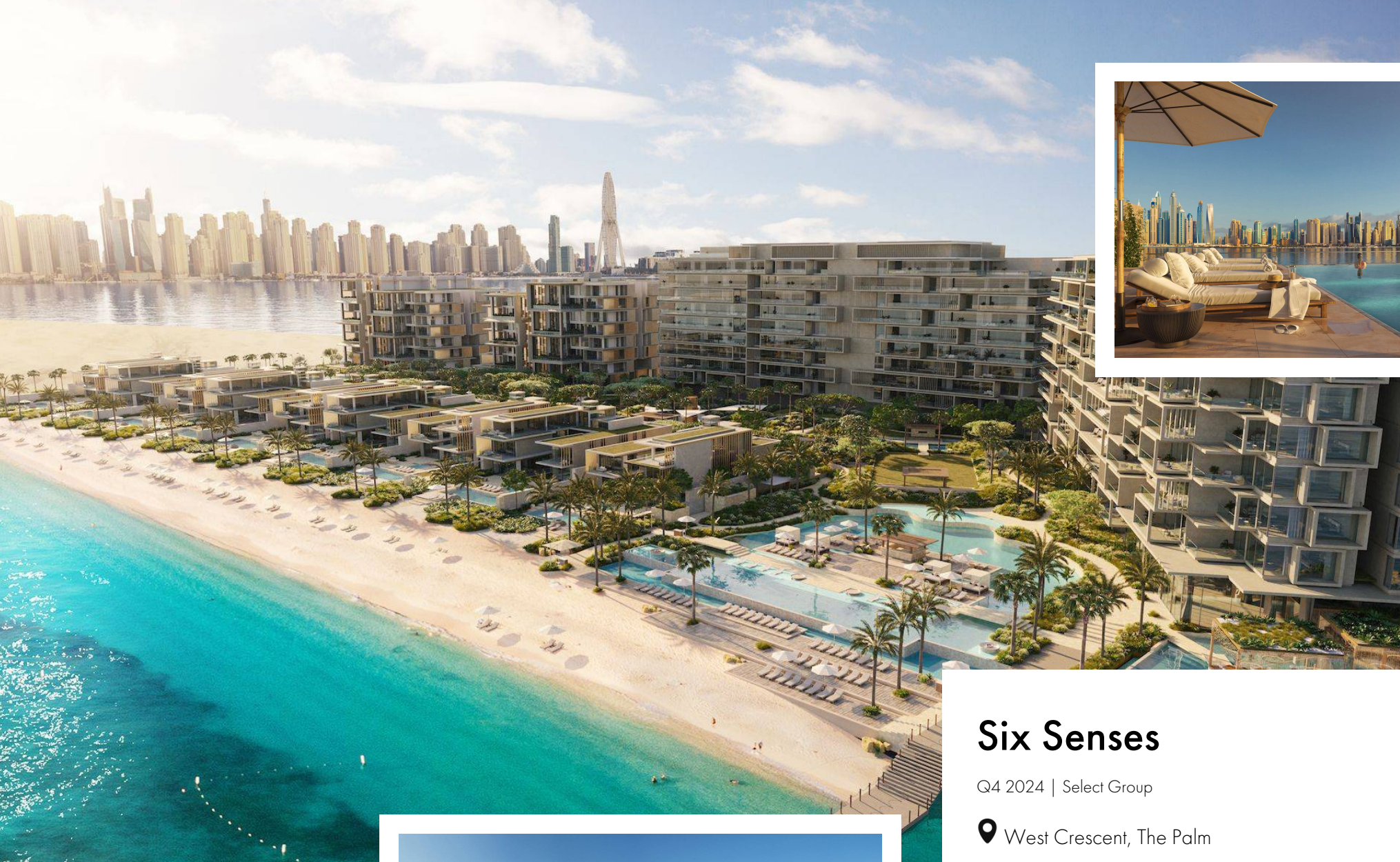
Helpline

**+971 (4) 597-3460**

[the-palm.ae](http://the-palm.ae)







## Six Senses

Q4 2024 | Select Group

📍 West Crescent, The Palm

apartments, villas

**from AED 4551 per ft<sup>2</sup> / \$ 1200 per ft<sup>2</sup>**

Six Senses is a collection of residences and elegant villas on the West Crescent of The Palm. The architecture of the complex is inspired by the natural coral that lies beneath the sea — white low-rise buildings with gold details are surrounded with azure water of the swimming pools and lush greenery.



Helpline

**+971 (4) 597-3460**

[the-palm.ae](https://the-palm.ae)





# AVA at Palm Jumeirah

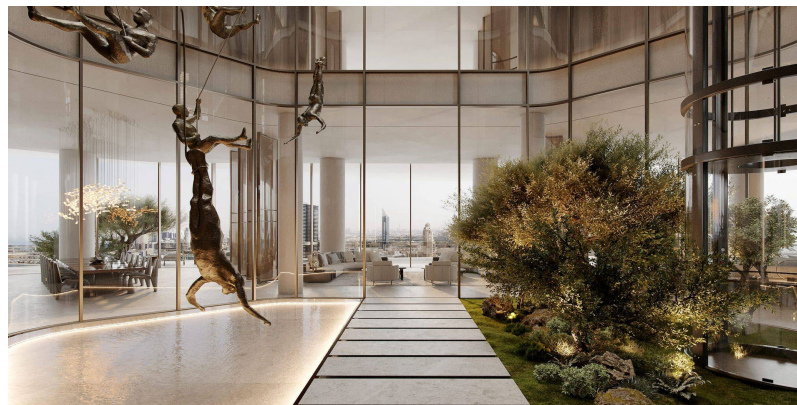
Q4 2025 | Omniyat

📍 Palm Jumeirah

## apartments

AVA at Palm Jumeirah is a unique collection of 17 private residences managed by Dorchester Collection. The 23 building is located on the threshold of the world-renowned landmark, Palm Jumeirah. The complex is sharing amenities with neighbouring iconic One at Palm Jumeirah, also managed by Dorchester Collection, including 100 meters white sand private beach, restaurant and private jetty access.

In AVA at Palm Jumeirah you can choose a full floor unit — the project features five 3-bedroom simplexes, ten 4-bedroom simplexes, one 4-bedroom duplex and one 5-bedroom penthouse over multiple levels with a private panoramic elevator and private lobby.



Helpline

+971 (4) 597-3460

the-palm.ae







## Ellington Beach House

📍 The Palm Jumeirah, Dubai

### apartments

Ellington Properties introducing EBH – Ellington Beach House, its first-ever residential building on one of the Dubai's man-made marvels – The Palm Jumeirah. Bringing customisation and tenacity from end to end attentive design and remarkable finishes. Ellington Beach House comes with 1 -, 2-, and 3-bedroom luxury apartments with amazing views of the pristine Arabian Sea. Offering a combination of striking interior design and premium finishes will grant a serene and contemporary life by the beach.



Helpline

+971 (4) 597-3460

the-palm.ae





# Orla by Dorchester Collection

Q4 2026 |

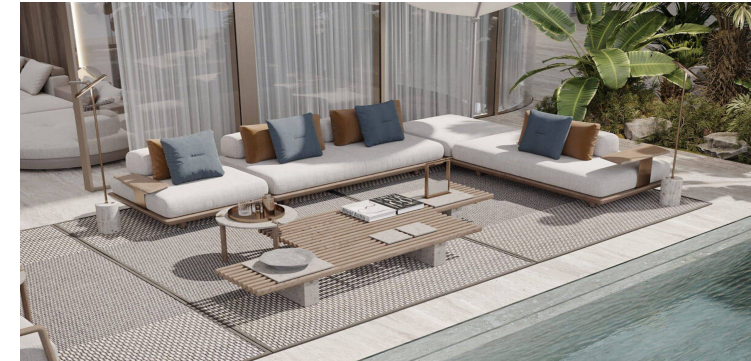
📍 The Palm Jumeirah, Dubai

apartments

**from AED 6028 per ft<sup>2</sup> / \$ 1600 per ft<sup>2</sup>**

Orla by Dorchester Collection is a premium residential project, situated on a beachfront plot at the apex of Palm Jumeirah's crescent. The complex enjoys a privileged position and uninterrupted 270-degree views from Dubai's sky-scraping skyline to the turquoise waters of the Arabian Gulf that stretch to the horizon. The architecture of the complex is designed by world-renowned architectural firm Foster & Partners — the concept of the project is based on natural elements, integrating flowing water features and lush greenery.

Orla by Dorchester Collection features apartments with unique layouts spread over one or two storeys. In the project you can choose a 2, 3 and 4 bedroom apartment, a 2, 3 and 4-bedroom simplex apartment, a 4-bedroom duplex or a 4-bedroom duplex with pool.



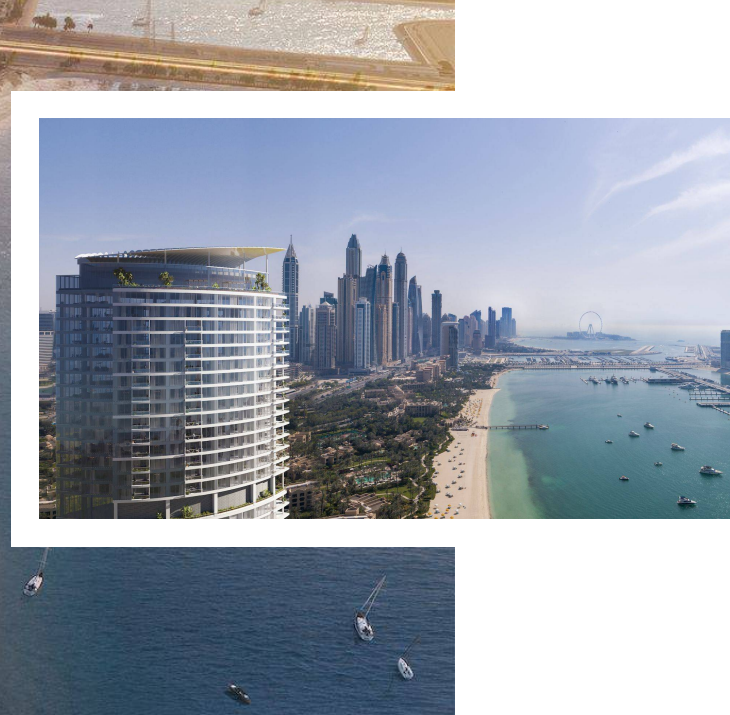
Helpline

**+971 (4) 597-3460**

[the-palm.ae](https://the-palm.ae)







## Palm Beach Towers

Q1 2026 | Nakheel PJSC

 The Palm Jumeirah

**apartments**

**from AED 4517 per ft<sup>2</sup> / \$ 1200 per ft<sup>2</sup>**

Palm Beach Towers is a residential complex on Palm Jumeirah island. The high-rise facades come with three towers connected with a retail level of podium resort-style facilities. A trio of towers comprising 1,265 apartments and duplexes, including 32 beach-facing apartments and 16 duplexes within the existing 14-storey Gateway building. In Palm Beach Towers you can choose a 1, 2, 3 and 4-bedroom apartment or spacious penthouse. Interior is complemented with stunning fixtures and finishes.

Residences with exceptional kitchens and expansive living and dining areas provide elegant space for work and play. Expansive floor-to-ceiling windows offer spectacular views of the Palm Jumeirah and the Dubai Eye.



Helpline

**+971 (4) 597-3460**

[the-palm.ae](https://the-palm.ae)





# Golden Mile

2009 |

📍 The Palm Jumeirah, Dubai

## apartments

Golden Mile is a residential project of 11 buildings on the embankment of the famous artificial island Palm Jumeirah. The architecture is made in a single oriental style — the facades in light colors are decorated with arched windows, carved balconies, and mezzanines. The ground floors housing townhouses are surrounded by a podium, the buildings are interconnected by passages. On the upper floors, there are duplex penthouses with terraces. In the residential complex, you can choose apartments with 1-3 bedrooms.

The interiors are finished in a modern style in laconic colors, built-in wardrobes are provided. The layout of the apartments includes a living room, kitchen, bedrooms, and bathrooms. Panoramic windows overlook the island and the Persian Gulf. In the evening, you can relax on your private balcony with a glass of champagne and enjoy the setting sun.



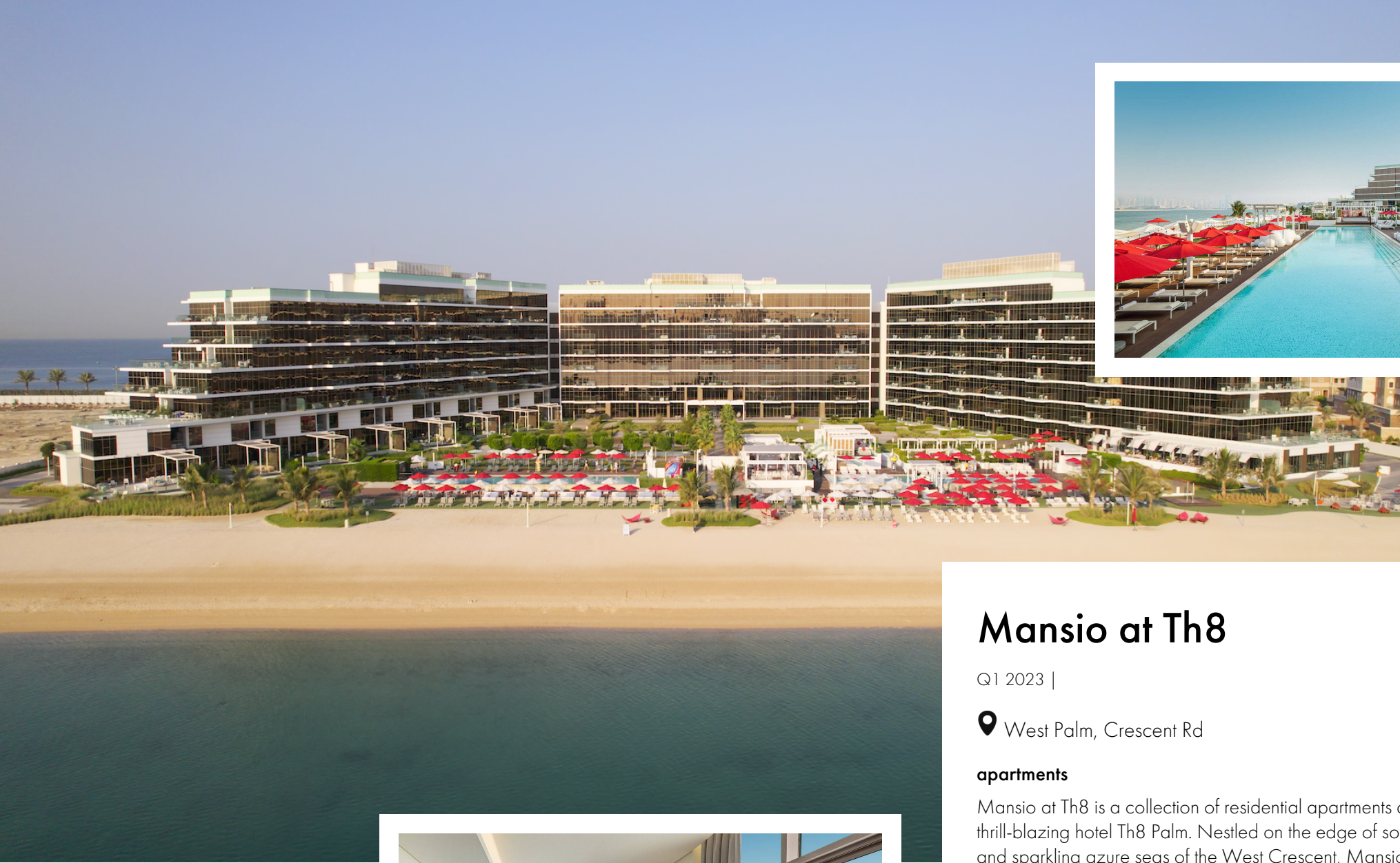
Helpline

+971 (4) 597-3460

[the-palm.ae](http://the-palm.ae)







## Mansio at Th8

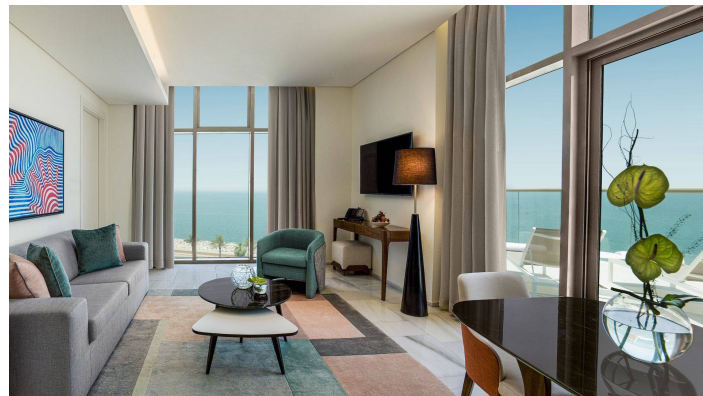
Q1 2023 |

📍 West Palm, Crescent Rd

### apartments

Mansio at Th8 is a collection of residential apartments at Dubai's most thrill-blazing hotel Th8 Palm. Nestled on the edge of soft, white sands and sparkling azure seas of the West Crescent, Mansio at Th8 provides panoramic vistas of the Dubai Marina skyline, The Atlantis, The Burj Al Arab and Ain Dubai.

Architecture of the project is inspired by the cool, ultra-luxe style of South Beach — every detail of the lightweight architecture and wide-open balconies is sophisticated and clean with a contemporary touch, while the territory of the complex is filled with Miami vibes. Managed by Accor Hotels Worldwide, Mansio offers a suite of fully furnished beachfront apartments with one, two, and three-bedrooms.



Helpline

+971 (4) 597-3460

the-palm.ae





# One Crescent

Q1 2025 |

📍 Palm Jumeirah

## apartments

One Crescent is an exclusive residential project, located on the famous Palm Jumeirah. The concept of the project is developed by Killa Design — a bold architecture of the building is inspired by greatness and engineered with grace, where each curve on the exterior is placed deliberately to hold the unit pools and green pockets, giving the building a wave-like and integrated architectural character. The entire design employs a simple material palette to embrace the distinctive style and emanates luxury living via its prominent presence in the metropolis.

One Crescent provides 25 luxurious 3, 4, 5 and 6-bedroom apartments — Sky Villas and Penthouses with stunning views of the Ocean, Burj Al Arab and the Dubai skyline, as well as terraces with private swimming pools. Taking inspiration from the streamlined forms of yacht design the interior is distinctive and timeless — clean lined contemporary panelling, warm natural toned timbers, restrained accents of marble and leather bring colour and texture to the interior hardscape.



Helpline  
**+971 (4) 597-3460**

[the-palm.ae](https://the-palm.ae)







# Whitewill Real Estate Experts

We sell deluxe, premium and business class property in more than  
140 residential developments in Dubai

**+971 (4) 597-3460**

